

# A1 in Northumberland: Morpeth to Ellingham

**Scheme Number: TR010041**

## **6.5 Environmental Statement – Figure 9.4 Non-Statutory Designated Sites**

**Part A**

APFP Regulation 5(2)(a)

Planning Act 2008

Infrastructure Planning (Applications: Prescribed  
Forms and Procedure) Regulations 2009

June 2020

Infrastructure Planning

Planning Act 2008

**The Infrastructure Planning  
(Applications: Prescribed Forms and  
Procedure) Regulations 2009**

**The A1 in Northumberland: Morpeth to Ellingham  
Development Consent Order 20[xx]**

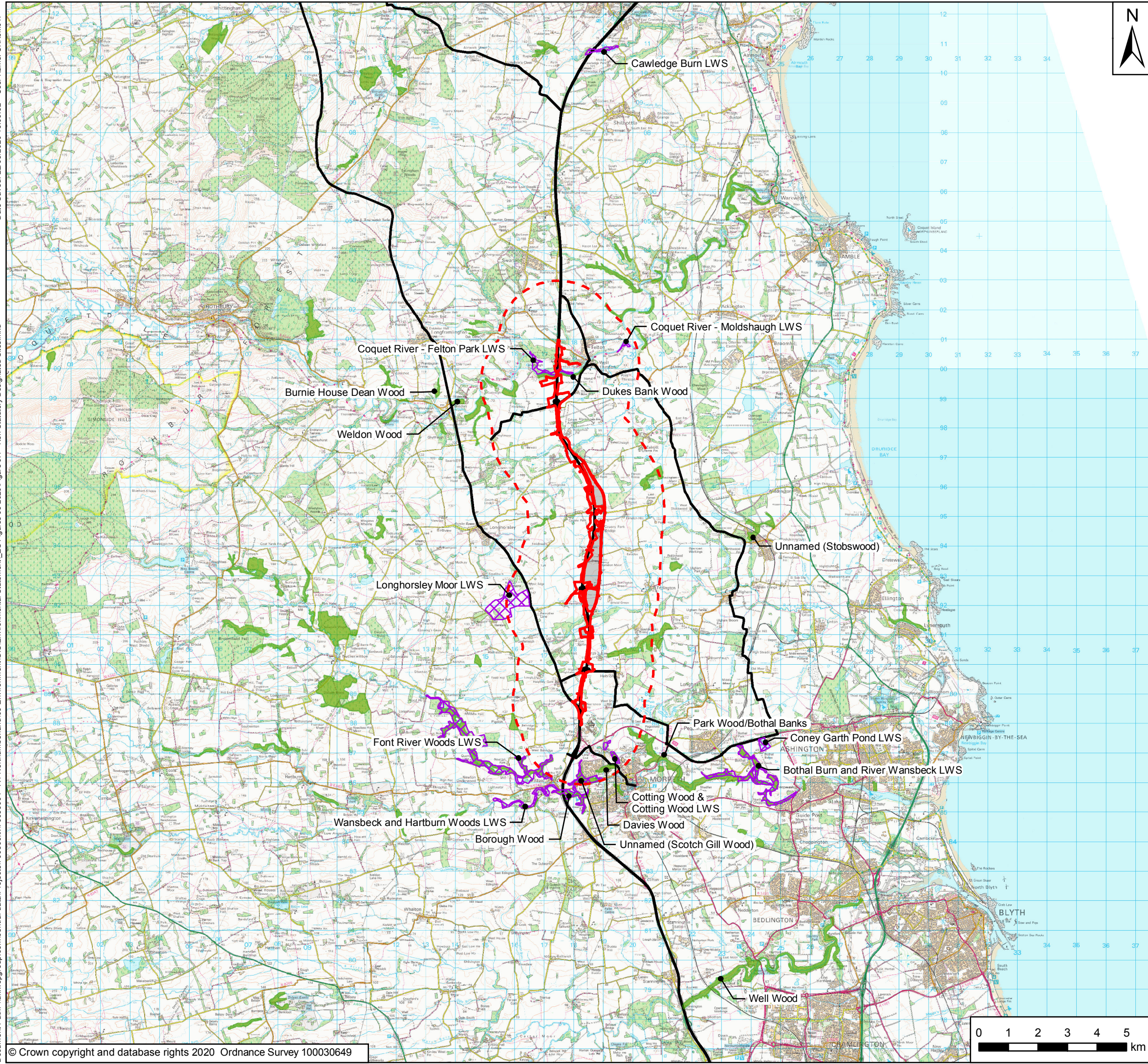
---

**Environmental Statement - Figures**

---

<b>Regulation Reference:</b>	APFP Regulation 5(2)(a)
<b>Planning Inspectorate Scheme Reference</b>	TR010041
<b>Application Document Reference</b>	TR010041/APP/6.5
<b>Author:</b>	A1 in Northumberland: Morpeth to Ellingham Project Team, Highways England

<b>Version</b>	<b>Date</b>	<b>Status of Version</b>
Rev 0	June 2020	Application Issue



**Key**

- Order Limits
- Areas Excluded from Order Limits
- 2km Study Area
- Affected Road Network
- Ancient Woodland Inventory
- Local Wildlife and Geological Sites



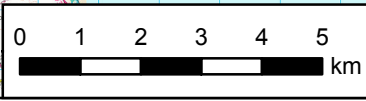
P05	June 2020	Fifth Issue	GH	JF	NM
P04	16/01/20	Fourth Issue	GH	JF	NM
P03	20/09/19	Third Issue	GH	JF	NM
P02	05/07/19	Second Issue	GH	JF	NM
P01	24/04/19	First Issue	GH	NM	KS
Rev	Date	Description	By	Chk'd	App'd

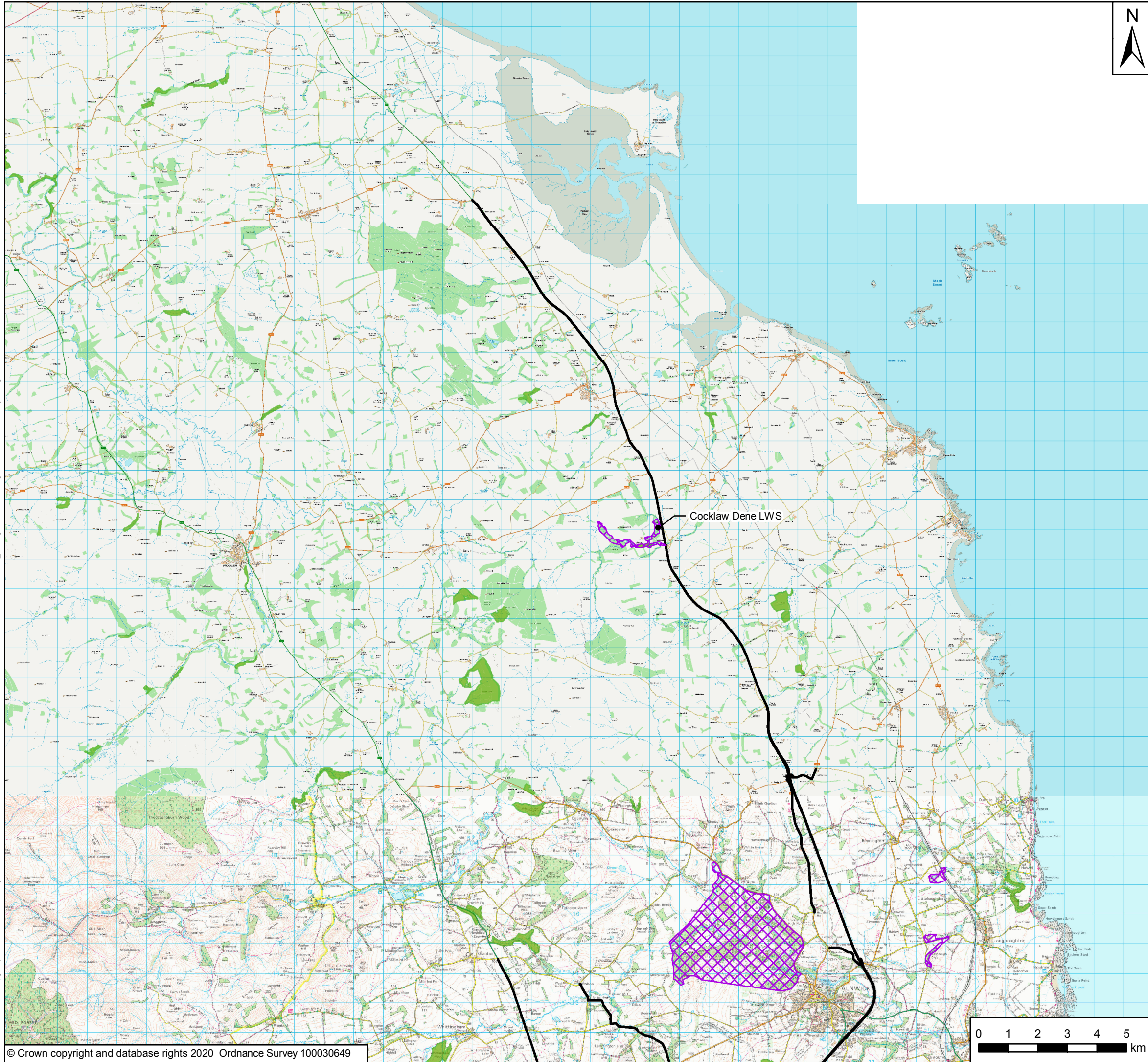
Client

Project Title: A1 in Northumberland: Morpeth to Ellingham

Drawing Title: Figure 9.4 Non-Statutory Designated Sites  
Page 1 of 2

Scale	1:125,000	Drawn	GH	Checked	NM	Approved	KS	Authorised	DM	
Original Size	A3	Date	24/04/19	Date	24/04/19	Date	24/04/19	Date	24/04/19	
Drawing Status	For Information								Suitability	S1
Drawing Number	HE551459	Project	M2F	Originator	RP	Volume	6.5	Project Ref. No.	70044136	
Location		Type	LE	Role	1942	Number		Revision	P05	





- Key**
- Order Limits
  - Areas Excluded from Order Limits
  - 2km Study Area
  - Affected Road Network
  - Ancient Woodland Inventory
  - Local Wildlife and Geological Sites



Rev	Date	Description	By	Chk'd	App'd
P05	June 2020	Fifth Issue	GH	JF	NM
P04	16/01/20	Fourth Issue	GH	JF	NM
P03	20/09/19	Third Issue	GH	JF	NM
P02	05/07/19	Second Issue	GH	JF	NM
P01	24/04/19	First Issue	GH	NM	KS

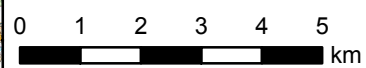
Client

Project Title **A1 in Northumberland: Morpeth to Ellingham**

Drawing Title **Figure 9.4 Non-Statutory Designated Sites**  
Page 2 of 2

Scale	Drawn	Checked	Approved	Authorised
1:125,000	GH	NM	KS	DM
Original Size	Date	Date	Date	Date
A3	24/04/19	24/04/19	24/04/19	24/04/19
Drawing Status				Suitability
For Information				S1

Drawing Number Project <b>HE551459</b>	Originator <b>WSP</b>	Volume <b>6.5</b>	Project Ref. No. <b>70044136</b>
<b>M2F</b> Location	RP Type	LE Role	1942 Number
			Revision <b>P05</b>



© Crown copyright 2020.

You may re-use this information (not including logos) free of charge in any format or medium, under the terms of the Open Government Licence. To view this licence:

visit [www.nationalarchives.gov.uk/doc/open-government-licence/](http://www.nationalarchives.gov.uk/doc/open-government-licence/)  
write to the Information Policy Team, The National Archives,  
Kew, London TW9 4DU, or email  
[psi@nationalarchives.gsi.gov.uk](mailto:psi@nationalarchives.gsi.gov.uk).

This document is also available on our website at [www.gov.uk/highways](http://www.gov.uk/highways)

If you have any enquiries about this document [A1inNorthumberland@highwaysengland.co.uk](mailto:A1inNorthumberland@highwaysengland.co.uk)  
or call 0300 470 4580\*.

\*Calls to 03 numbers cost no more than a national rate call to an 01 or 02 number and must count towards any inclusive minutes in the same way as 01 and 02 calls.

These rules apply to calls from any type of line including mobile, BT, other fixed line or payphone. Calls may be recorded or monitored.

Registered office Bridge House, 1 Walnut Tree Close, Guildford GU1 4LZ  
Highways England Company Limited registered in England and Wales number 09346363